

PF4 High Pressure Base Mounted Filter



Hy-Pro G7 Dualglass DFE rated high performance filter elements.

APPLICATIONS

Ideal for protecting sensitive components in hydraulic circuits, and should be located upstream of specific components or directly after the pressure pump.

- Protect a component that is very sensitive to particulate contamination (ie servo valve) and requires clean pressurized fluid for reliable operation.
- To help meet mill/plant target cleanliness codes and required ISO 4406:1999 cleanliness standards set by hydraulic component manufacturers (warranty).
- To protect a component that is very expensive where minimizing the risk of failure and replacement cost justifies the cost of filtration.
- To protect a component or system that can affect overall mill productivity and cause downtime.

PF4 FEATURES

DFE rated elements	G7 Dualglass and PE glass elements are DFE rated to assure performance even when exposed to the toughest hydraulic systems (See DFE literature for details)
Base mount Top loading	Element is removed by removing housing cover, minimizing mess, no heavy bowl to lift, ease of service
Low housing pressure drop	Unique internal flow paths provide low resistance to flow. (Low pressure drop)
Coreless elements	PF4 housings (with bypass valve option) can be ordered with Hy-Pro coreless filter element for easy disposal (crush or incinerate). Retro-fit kits available to convert conventional housings to coreless.
HF4 compatible	Port to port dimension, mounting pattern, and element design meet HF4 automotive specification. (Automotive standard)
High flow capacity	Triple length option allows for flow rates up to 150 gpm for select media

PRODUCT SPECIFICATIONS

Pressure ratings	5000 psi (354 bar) max operating 13500 psi (931 bar) burst
Flow rate	150 gpm (560 lpm) max with F port
Element collapse	code K: 150 psid (10 bar) code K3: 3000 psid (212 bar) code KC: 150 psid (10 bar) * *coreless element series
Temperature rating	Buna -45°F(-43°C) to 250°F(121°C) Viton -15°F(-26°C) to 275°F(135°C)
Housing material	Head and Cover: Ductile iron Bowl: Seamless steel tubing
Fluid compatibility (ISO 2948)	Compatible with all petroleum, based oils, HWBF, water glycol, oil/water emulsion, and specified synthetic fluids with Fluorocarbon or EPR seals (call factory)
Flow fatigue rating	3500 psi (238 bar)
Differential pressure indicator trigger	Visual, electrical, combination, Thermal lock-out (see options)
Bypass valve crack	50 psid (3.5 bar) standard.
Weight (no element)	Single length bowl 60 lbs (27 kg) Double length bowl 83 lbs (38 kg) Triple length bowl 110 lbs (50 kg)



HIGH PERFORMANCE FILTER ELEMENTS — THE HEART OF A FILTER

Dynamic Filter Efficiency (DFE) Testing

Revolutionary test methods assure that DFE rated elements perform true to rating even under demanding variable flow and vibration conditions. Today's industrial and mobile hydraulic circuits require elements that deliver specified cleanliness under ALL circumstances. Wire mesh supports the media to ensure against cyclical flow fatigue, temperature, and chemical resistance failures possible in filter elements with synthetic support mesh. Contact your distributor or Hy-Pro for more information and published articles on DFE testing.

Media Options

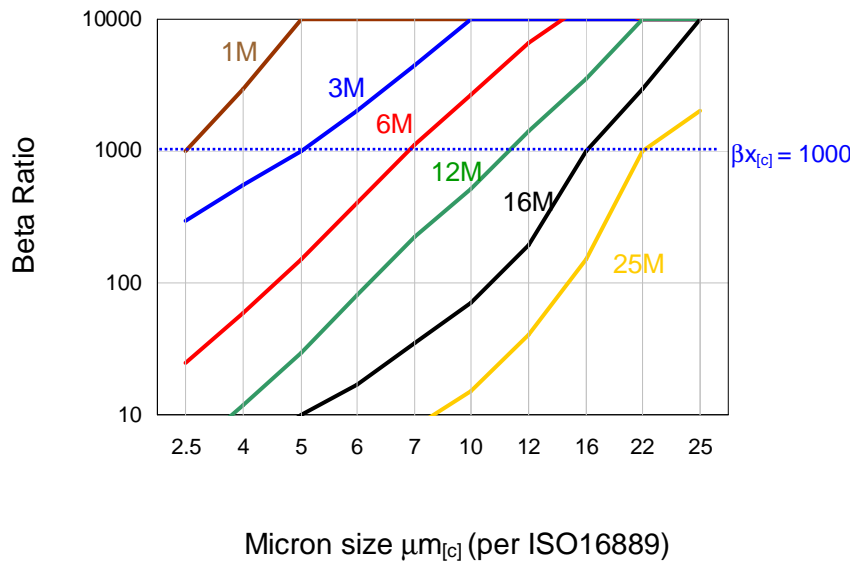
Through extensive testing we have developed media choices to handle any application. Options include G7 Dualglass, Dynafuzz (stainless fiber), and Wire mesh (stainless).

Fluid Compatibility

Petroleum based fluids, water glycol, polyol ester, phosphate ester, high water based fluids and many other synthetics. Contact us for seal material selection assistance.

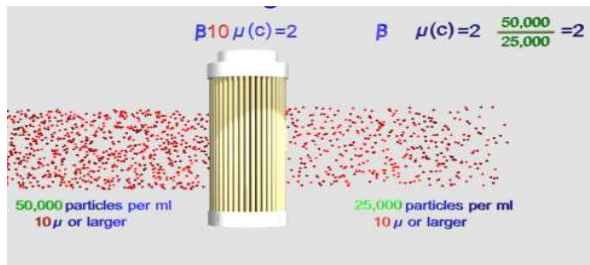
FILTER MEDIA SPECIFICATIONS

Glass Media Code Filtration Efficiency (Beta Ratio) vs Micron

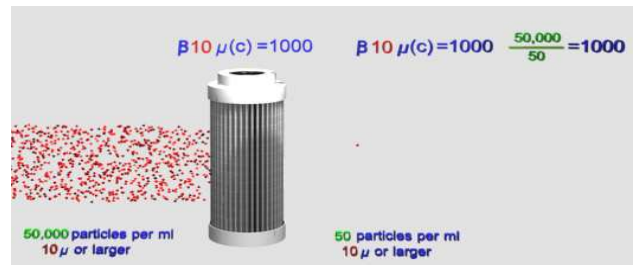


media code	media description
A	G7 Dualglass high performance media combined with water removal scrim. $\beta_{x[c]} = 1000$ ($\beta_x = 200$)
M	G7 Dualglass our latest generation of DFE rated, high performance glass media for all hydraulic & lubrication fluids. $\beta_{x[c]} = 1000$ ($\beta_x = 200$)
W	Stainless steel wire mesh media $\beta_{x[c]} = 2$ ($\beta_x = 2$) nominally rated

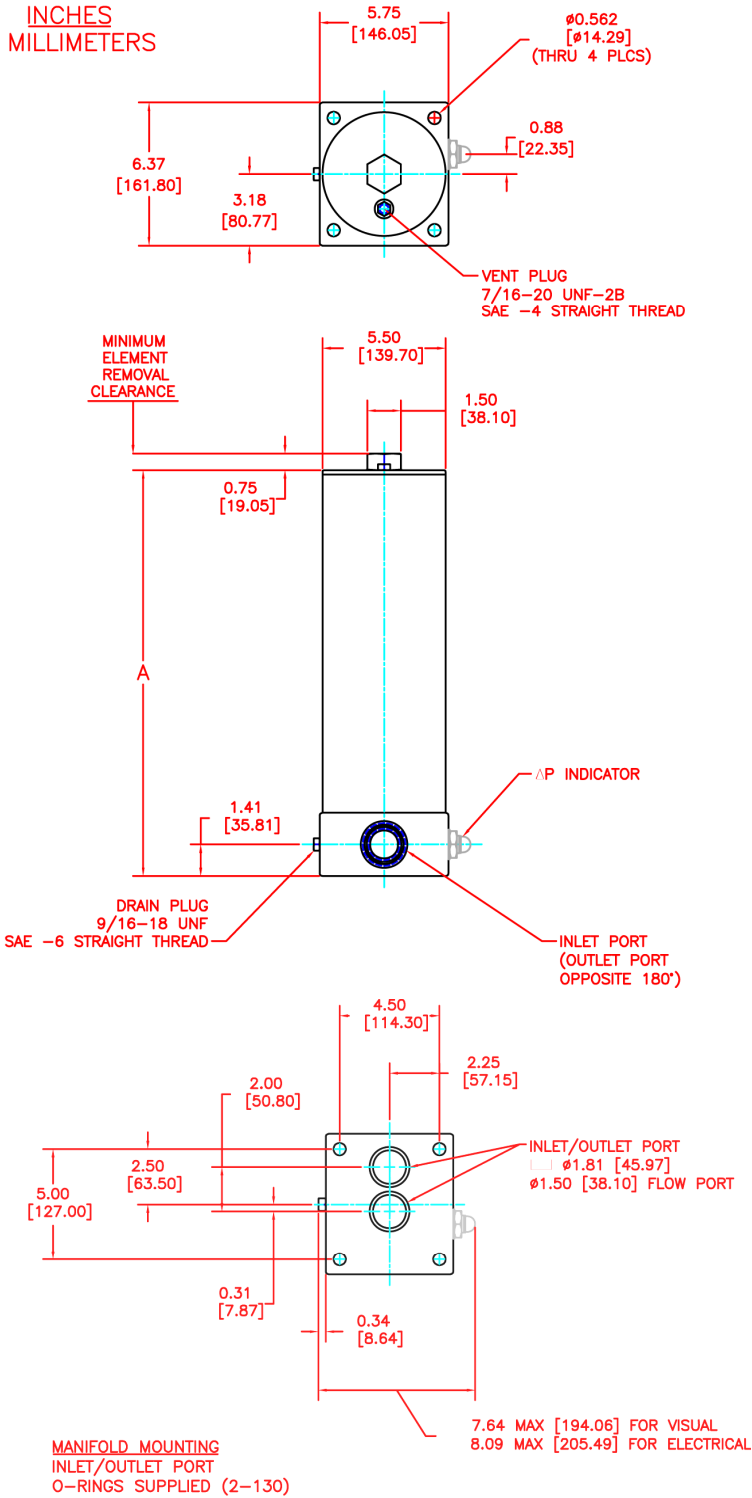
Typical cellulose media performance



Hy-Pro G7 Dualglass media performance

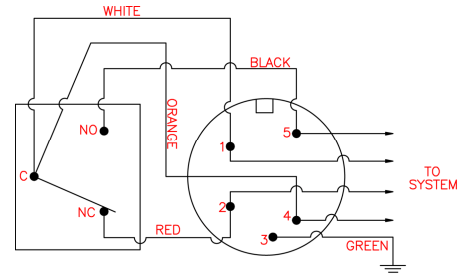


INSTALLATION DRAWINGS & INDICATOR WIRING DIAGRAMS

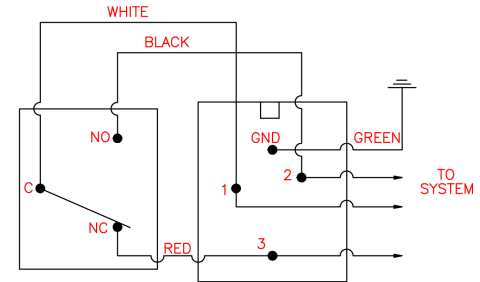


Dimension	L9	L18	L27
A (overall length)	15.31 (389)	24.7 (628)	34.0 (864)
Element removal	9.0 (229)	18.0 (457)	27.0 (686)

Electrical indicator wiring diagrams (Aluminum housing + thermal lockout)

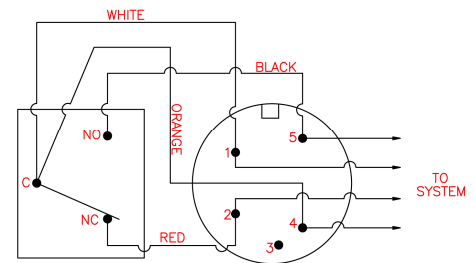


Brad Harrison 5-pin receptacle 41512

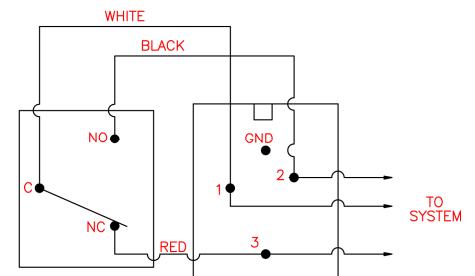


Hirschman 4-pin DIN 43650

Electrical indicator wiring diagrams (Plastic housing NO thermal lockout)



Brad Harrison 5-pin receptacle 41512



Hirschman 4-pin DIN 43650